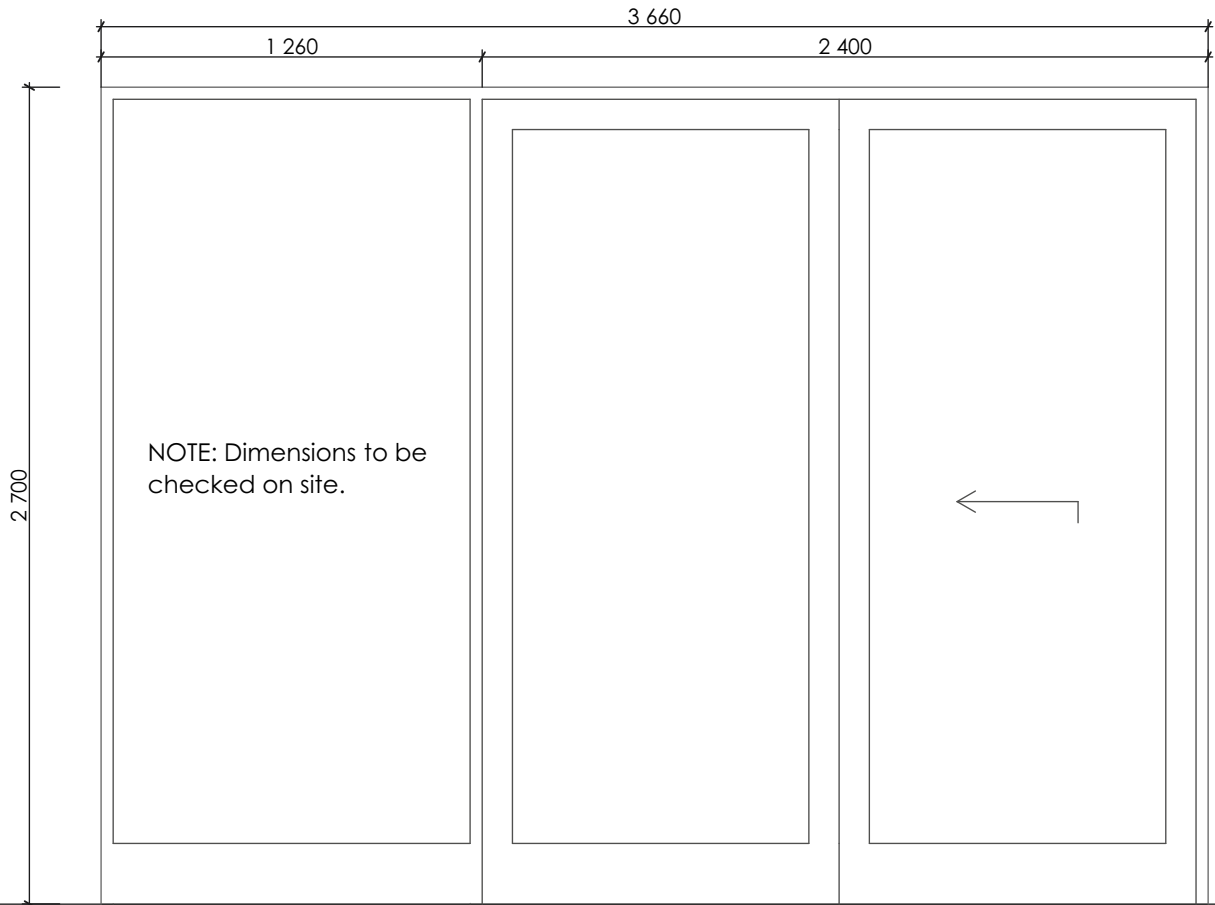


ROOM	Secretaries	DOOR TYPE D05



- DOOR** 3660 x 2700mm purpose made Natural Anodised Aluminium Sliding door with sidelight. Sliding panel and fixed panels as indicated
- FRAME** Purpose made Natural Anodised Aluminium frame. All profiles to be Hulamin Nu-Klip, technical or similar approved. All gasket, glazing beads, handles and hardware approved by Architect. All frames must be sealed around with clear silicone.
- FINISH** 8.76mm Clear HPR Intruderprufe Laminated glass. All windows and glass to be installed by AAAMSA member according to AAAMSA standards.
- LOCKSET** Dormakaba Stainless Steel rectangular flush pull handle (Code: DFP-SS-026), size 50mm x 102mm with Stainless Steel narrow stile hook lock (Code: D02925) with 25mm backset and Satin Nickel double cylinder lock (Code: DDC056001).
- FURNITURE** N/A.
- NO REQUIRED** 1 (one)

*Manda Bakkes*

**ARCHITECTS**

box 31059, windhoek, tel 302 810, manda@mbanam.com.na

Project: Law Society Renovation

Title <b>DOOR SCHEDULE</b>			
Date 28 March 2019	Revision	Project No <b>331</b>	Drawing No <b>3/505</b>
Scale 1:25			